



Judo Federation of Australia Inc

MEMBER OF
THE INTERNATIONAL JUDO FEDERATION
THE OCEANIA JUDO UNION, THE AUSTRALIAN OLYMPIC COMMITTEE &
AUSTRALIAN COMMONWEALTH GAMES ASSOCIATION
ABN: 49 305 099 035

REFEREES POLICY AND ADMINISTRATION DOCUMENT

CONTENTS:

- 1. STRUCTURE**
- 2. NOMINATION PROCESS**
- 3. ROLE AND FUNCTION OF THE COMMISSION**
- 4. RECRUITMENT AND TRAINING**
- 5. REFEREEING REQUIREMENTS**
- 6. DRESS CODE**
- 7. ROLE OF THE COMMISSION AT NATIONAL TOURNAMENTS**
- 8. UPGRADING OF REFEREES TO NATIONAL LEVEL**
- 9. SELECTION OF REFEREES FOR UPGRADING TO INTERNATIONAL LEVEL**
- 10. SELECTION OF REFEREES FOR INTERNATIONAL EVENTS**
- 11. ALLOCATION OF REFEREES AT NATIONAL TOURNAMENTS**
- 12. RECYCLING OF REFEREES**
- 13. REFEREE RULES (TO BE ADDED WHEN NECESSARY)**

APPENDICES:

- APPENDIX 1 - JFA REFEREEING COMMISSION STRUCTURE**
- APPENDIX 2 - JOB DESCRIPTION: NATIONAL REFEREE DIRECTOR**
- APPENDIX 3 - JOB DESCRIPTION: REFEREE COMMISSION MEMBER**
- APPENDIX 4 - APPLICATION FOR UPGRADING**
- APPENDIX 5 - REFEREE RULES**
- APPENDIX 6 - REFEREES' CARD (IN PROGRESS)**

1. STRUCTURE

The structure of the JFA (Inc.) Refereeing body is composite of the following:

- The JFA director of referees
- The Referee Commission members
- The state chairpersons
- International and National referees
- State and Local referees

The JFA Board of Directors selects the Refereeing director for a period of two years at an annual general meeting according to the terms of the JFA (Inc.) constitution.

The commission will consist of the following positions, namely:

- JFA director of Referees
- 3 representatives from different states. If needed, other commissioners may be co-opted from time to time.

All commission members are required to hold one of the following official accreditations:

- An IJF A (International) or B (Continental) accreditation preferably.
- An OJU A or B accreditation.

The above-mentioned is however subject to the recycling of referees policy (refer to paragraph 12 **supra**).

An organisational chart depicting the structure is attached for your convenience (Appendix 1)

The state bodies in terms of their individual state constitutions elect the state chairperson.

The commission guides the career path of all national and international referees, while the career path of learner (club), local and state referees is guided by the state chairperson.

2. NOMINATION PROCESS

The Director of Referees is elected bi-annually by the JFA BOD (Board of Directors) from nominations received at the AGM. Within one month after the AGM the Referee director re-appoints his/her Commission members, subject to approval by the JFA BOD.

3. ROLE AND FUNCTION OF THE COMMISSION

The Commission supports and looks after the interests of all JFA registered referees. The director is the spokesperson of Refereeing in Australia and also represents the refereeing commission at all JFA council meetings. The director reports to the director commissioned with the referee function of JFA (currently the president)

The main tasks of the Commission are as follows:

- To examine and grant all National (JFA) accreditations throughout Australia
- To ensure that JFA sanctioned events are conducted in accordance with IJF refereeing rules and JFA regulations.
- To develop a consistent interpretation of the IJF rules across all of the states.
- To evaluate all upgrading referees at selected State Open / National competitions.
- To create a list of candidates for upgrading to International status.
- To submit a list of qualified and duly selected referees to officiate at National championships to JFA.
- To keep an updated data-base of all JFA National and higher qualified referees, according to the following categories:
 - ◆ active
 - ◆ in-active
 - ◆ retired
 - ◆ career path
 - ◆ activities during 4 year cycle
- To provide input into JFA Technical Committee.
- To promote interest in and study of refereeing in Australia as well as the practice thereof.
- To organize National courses / seminars to ensure standardisation of refereeing practices. This will typically be at the national event and state opens.

- To assist with referee briefings where possible at all Open events (VIOC, NSW, QLD and ACT)
- To negotiate funding for JFA refereeing purposes.
- To ensure that audio-visual DVD's received by JFA are distributed to all the State chairpersons.
- Responsible for the issuing of all national JFA certificates related to refereeing.

4. RECRUITMENT AND TRAINING

It is the responsibility of state chairpersons to recruit referees within their respective states and territories, and to train such referees up to state level.

It is the responsibility of the national commission to ensure that all national and international referees, as well as the state chairs are kept up to date with the latest IJF rules and interpretation of such rules. The commission will hold at least one national course per calendar year. This course will cover the finer detail of refereeing at National and International level, as well as pass new international rules, and interpretation of rules.

It is to be encouraged that the athletes commission, players, coaches and managers attend referees courses as part of ongoing education and understanding of referees rules.

5. REQUIREMENTS FOR REFEREEING

The requirements for referees up to National level are as follows:

Referee Grade	Time	Judo Grade	Minimum Age	Theoretical Examination	Examiner
Learner(club)	-	5 Kyu	10	No	None
Local	20 hours	4 Kyu	14	Local	State
State	30 hours and 1 year as local	3 Kyu	16	State	State
National	60 hours and 2 years as state A	1 st Kyu	18	National	National Commission

Based on ability, in exceptional circumstances after 1 year as State referee, a referee may be considered on the strong recommendation by the State Referee Chairperson to referee at National level (to be graded to a national level at the State Open events)

Please note:

It could be proposed that Shodan candidates need around 10 hours as a brown belt at learner/local level (Relevant grading requirements will need to be amended – this is to expose potential referees for the future and a matter for the grading commission to look at).

The above age and times should be seen as a guideline only. In exceptional cases, the commission can consider a lower age for upgrading to national level. Excepting for the judo grade requirement, the state chairperson may consider a lower minimum requirement (such as minimum age) for grading to local and state level.

The time requirement starts at 0 hours after every upgrade. We need to recognise that all gradings should be competency based. If a referee shows rapid progress he or she should be graded accordingly.

The required hours in the time requirements for grading to national level is to be obtained at state and territory competitions and open competitions only, i.e. time at club competitions will not be considered as part of the 60 hour requirement. It should be clear that time earned includes hours both on and off (resting) the mat - from opening to closing bow on competition day.

The requirements for upgrading to international level, as laid down by the Oceania Judo Union (OJU) and the International Judo Federation (IJF), is as follows:

Referee Certification Categories and Levels (taken from the IJF guidelines)

A referee's certification level determines the type and level of competition that a referee may officiate.

Within each country, each National Referee Commission determines their levels and respective criteria, and regulates certification through evaluations and examinations. Generally there are at least three levels for National Certification, those being "A", "B" and "C".

At the international level there are three levels of certification, Regional (Oceania A, B, and C, Continental and International. The control of the Continental and International referee license is under the jurisdiction of the IJF Referee Commission.

Continental Referee Requirements

Examiners

Examination is conducted by at least three IJF International referees approved by the IJF Referee Commission.

Criteria for Examination

1. age: 25 to 45 years, starting January 1, year 2000;
2. 7 years experience in judo minimum;
3. 2 years holding a regional license, or, 4 years holding a national license minimum;
4. an active referee at the national and regional levels;
5. approval by the national judo governing body of the country in which the candidate holds citizenship.
6. nominated by the candidate's judo union;
7. IJF recommended dan level - Sandan
8. \$50 dollars, US funds application fee

Examination Events

1. Continental Union level
2. International events with a minimum of 4 participating countries; contestants may be male or female of at least IJF Junior age. Dates and number of exams determined at the discretion of the Union Referee Commissions

Method of Examination

1. Oral questions lasting 15 to 25 minutes based on the IJF Referee Rules.
2. Practical - must referee a minimum of 6 matches; and judge a minimum of 6 matches.

Validity of License

4 to 6 years maximum from date of examination; renewable after re-evaluation.

International Referee Requirements

Examiners

Examination is conducted by the IJF Refereeing Commission which is comprised of a minimum of three members from at least two of the international judo unions.

The Commission member representing the union where the examination is being held must be one of the three examiners.

1. age: 29 to 50 years;
2. 15 years experience in judo minimum;
3. 4 years holding a Continental license minimum;
4. an active referee at the regional and continental levels;
5. approval by the national judo governing body of the country in which the candidate holds citizenship.
6. nominated by the candidate's judo union;
7. IJF recommended dan level - Yondan
8. \$100 dollars, US funds application fee
9. must be able to communicate in at least one of the two official languages of the IJF (French or English).

Criteria for Examination

Examination Events

1. Union Championships or equivalent events with a minimum of eight participating countries; male or female contestants of at least IJF Junior age;
2. Examination cannot take place at Olympic Games or World Championships.
3. Each Union can host one exam every two years.

1. Practical - must referee a minimum of 6 matches; and judge a minimum of 6 matches.

Method of Examination

Validity of License

4 years maximum from date of examination;
renewable after re-evaluation.

6. OFFICIAL DRESS CODE:

International / National / State Opens - As per the IJF regulations.
State and territories – As prescribed by state bodies.

7. ROLE OF THE COMMISSION AT NATIONAL COMPETITIONS

The Director and Commission will be responsible for the organisation of the referees at all national competitions. This includes the organisation of referees for the final/medal contests. For the purpose of upgrading to national status, State Open events (VIOC, NSW, QLD and ACT) are considered as national tournaments and two commissioners need to be present. For State Open events, it is the responsibility of the chair of the host province to invite the necessary number of referees.

8. UPGRADING OF REFEREES TO NATIONAL LEVEL

The commission will select the examiners for all examinations, both theoretical and practical, of referees to national level. These examinations can only take place at the State Open events. It is the responsibility of the state chairs to nominate state level referees for upgrading. The written application must include the age, judo grade, hours officiated and personal recommendation from the state chair. This application must reach the Director referees at least 2 weeks prior to the event. In exceptional circumstances, the national commission will be at liberty to nominate persons for upgrading.

National A, B and C levels are all evaluated at State Open events. However, under exceptional circumstances, the commission may recommend a higher national grade at the national championships.

The practical examination will be according to the IJF format. For the practical examination, the applicant will be required to referee a minimum of six contests, and act as corner judge for a minimum of 6 contests. There will be a minimum of two examiners for the practical examinations. The practical examination will take place at the following State Opens only: NSW, ACT, VIOC and QLD.

Only contests between young men/women and seniors will be considered for practical examination purposes.

8. SELECTION OF REFEREES FOR UPGRADING TO INTERNATIONAL LEVEL

It is the ultimate goal for the JFA to have as many current Olympic, World and Continental graded referees as possible. To this end, nominations for upgrading to International level must have this goal in mind, in particular the maximum age limits for such graded referees.

It is the prerogative of the OJU Referee Commission to upgrade referees to OJU status. The JFA referees director will make all nominations for such upgrading to the Director, Referees, OJU. The commission will decide on such nominations. In making such nominations, the commission will consider the quality, dedication, age, sex and mobility of the referee.

9. SELECTION OF REFEREES FOR INTERNATIONAL EVENTS

The OJU Referee Director and the OJU Referee Commission will nominate referees to participate in Junior and Senior World championships and Olympic events.

The JFA commission will nominate referees to participate in regional international events (e.g. OJU competition, Oceania World Cup). Such nominations will consider the requirement of the event, the quality of the referee, the future upgrade status of the referees and the dedication of such referees.

10. ALLOCATION OF REFEREES AT NATIONAL COMPETITIONS

It is the intention that there is a correlation between the number of mat areas and the number of referees that are provided for the full duration of the tournament.

Selection for the *national championships* will rest with the national commission. Referees will be selected on criteria such as currency, attitude, quality, dedication, mobility and performance at state open events. Numbers will depend on the mat areas used as well as the number of participants.

It should be very clear that only the best referees will be chosen for the nationals. As there will be no upgrading at the nationals (unless there are exceptional circumstances) only experienced, current referees will be allowed to participate. We are looking at a model where no more than 27 referees (three rotations – 9 per mat) and three reserves will be invited to the nationals, given that there will be three mat areas. This will allow us to reimburse properly and only have the best of the best to evaluate our top players.

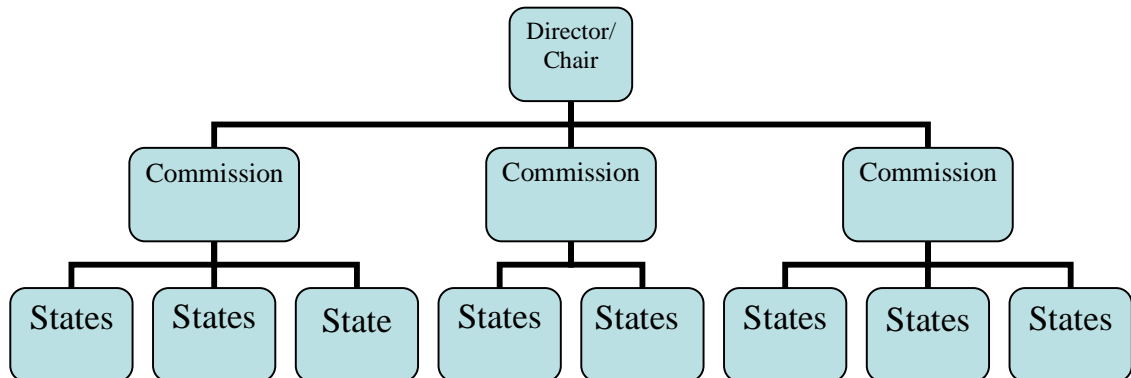
11. CURRENCY AND RECYCLING OF REFEREES.

It is the responsibility of all referees to remain current. This means that they must remain up to date with the latest IJF rules, and interpretation of such rules, as well as remain active.

To this end all National and International graded referees must attend a national course at least once every two years, or three State Open briefings every two years *and* referee a minimum of 10 hours in any one calendar year at State Open and/or Nationals. Failure to comply with this minimum requirement will mean a period of recycling

APPENDIX 1

ORGANISATIONAL CHART - JFA REFEREE STRUCTURE 2008



APPENDIX 2

JOB DESCRIPTION

- Position** : Director of Referees, JFA (Inc.)
- Reports to** : The Board of Directors, JFA (currently contact is the President)
- Purpose** : To provide and develop a pool of qualified referees within the JFA structure and oversee all refereeing activities within the National body.
- Responsibilities** :
- Control refereeing activities and supervise the adherence to IJF refereeing rules pertaining to refereeing and decisions.
 - Assist and advise on refereeing activities at all National and State Open events.
 - Confirm, control and co-ordinate the Referee examination
 - To assist in evaluating all upgrading referees at State Open events as well as help run the national event.
 - To create a list of candidates for upgrading to International status.
 - To establish permanent contact with the State co-ordinators of Referees in order to interpret all IJF rules.

APPENDIX 3

JOB DESCRIPTION:

- Position** : Refereeing Commission Member
- Reports to** : National Director of Referees.
- Purpose** : To provide and develop a pool of qualified referees within each region and oversee all refereeing activities within the Regions.

Responsibilities :

- To examine and grant all National (JFA) accreditation's throughout Australia.
- To ensure that JFA sanctioned events are conducted in accordance with IJF refereeing rules and JFA regulations.
- To ensure that all JFA competitions are conducted in accordance to IJF competition standards.
- To keep an updated data-base of all JFA National and higher qualified referees, according to the following categories:
 - ◆ active
 - ◆ in-active
 - ◆ retired
- To provide input into JFA Technical Committee.
- To promote interest in and study of refereeing in Australia as well as the practice thereof.
- To help organise and assist the National Director with National and State Open courses / seminars to ensure standardization of refereeing practices.
- To negotiate funding for JFA refereeing purposes.
- To ensure that audio-visual DVD's received by JFA are distributed to all the State co-ordinators of referees.
- To provide the National Director of Referees with a job description of all the State Co-ordination of referees within their states and territories (in line with National Directorate)
- Will look after all invitees on behalf of JFA while they are in Australia. (e.g. Accommodation, meals, transport etc.)
- Is responsible for the issuing of all national JFA certificates related to refereeing.
- Oversee that all State Co-ordinators within their specific regions submit the results of all National and State refereeing examinations.
- The results database must be submitted to the National Director of Referees during the National Championships.

APPENDIX 4

APPLICATION : UPGRADING NAT. & INT. REFEREE			
Surname		Name	
Birth Date		Hours	
Grading		Date graded	
Book nr.		Licence nr.	
State		Club	
Phone nr.		Mobile nr.	
		E-Mail.	
<u>ACHIEVEMENTS SINCE LAST UPGRADING:</u>			
<u>Hours worked</u>			
<u>Club</u>			
<u>State Opens</u> (include Regional Events)			
<u>National</u>			
<u>International</u>			
<u>Total</u>			
WERE YOU LICENSED MEMBER OF JFA LAST YEAR?			
Cost: OJU B = US \$ 45 OJU A = US \$ 50 IJF B/Continental = US \$ 100 & IJF = US \$ 250			
Applicants signature:			

Approved by State:

APPENDIX 5

IJF REFEREE RULES – updated rules to be inserted from time to time.

APPENDIX 6

REFEREES' CARD - in progress