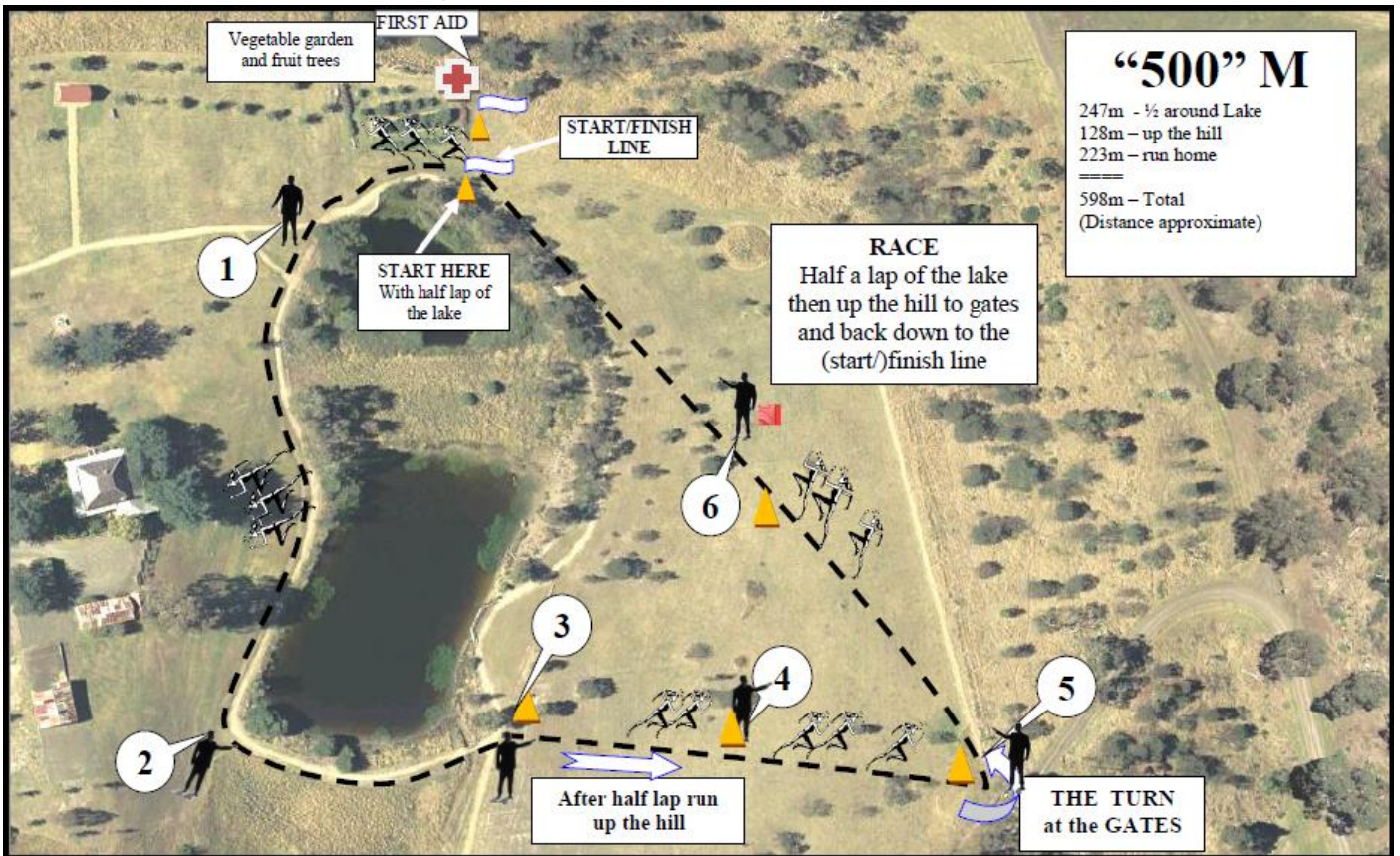


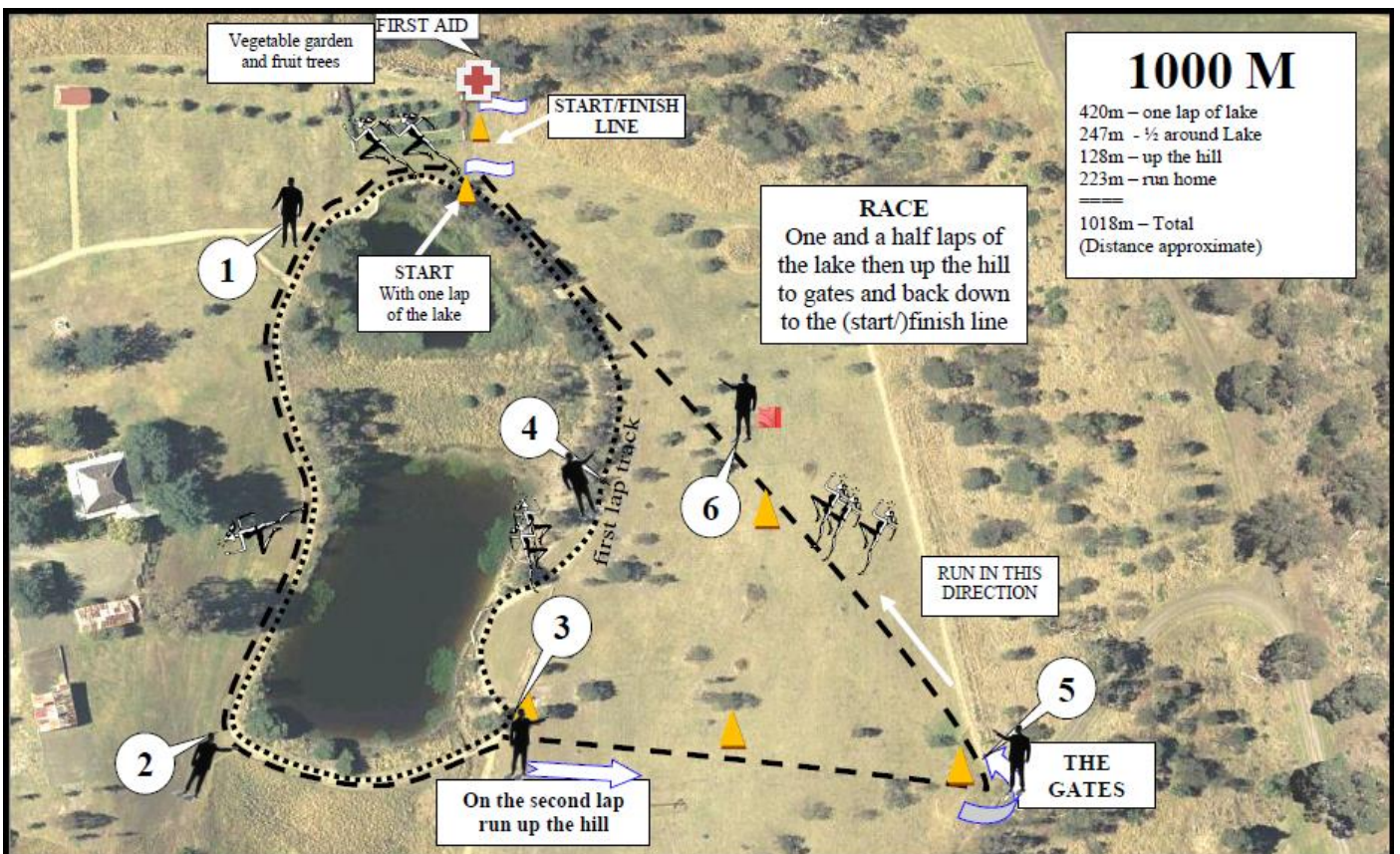
500m (which is really more like 600m)



1000m

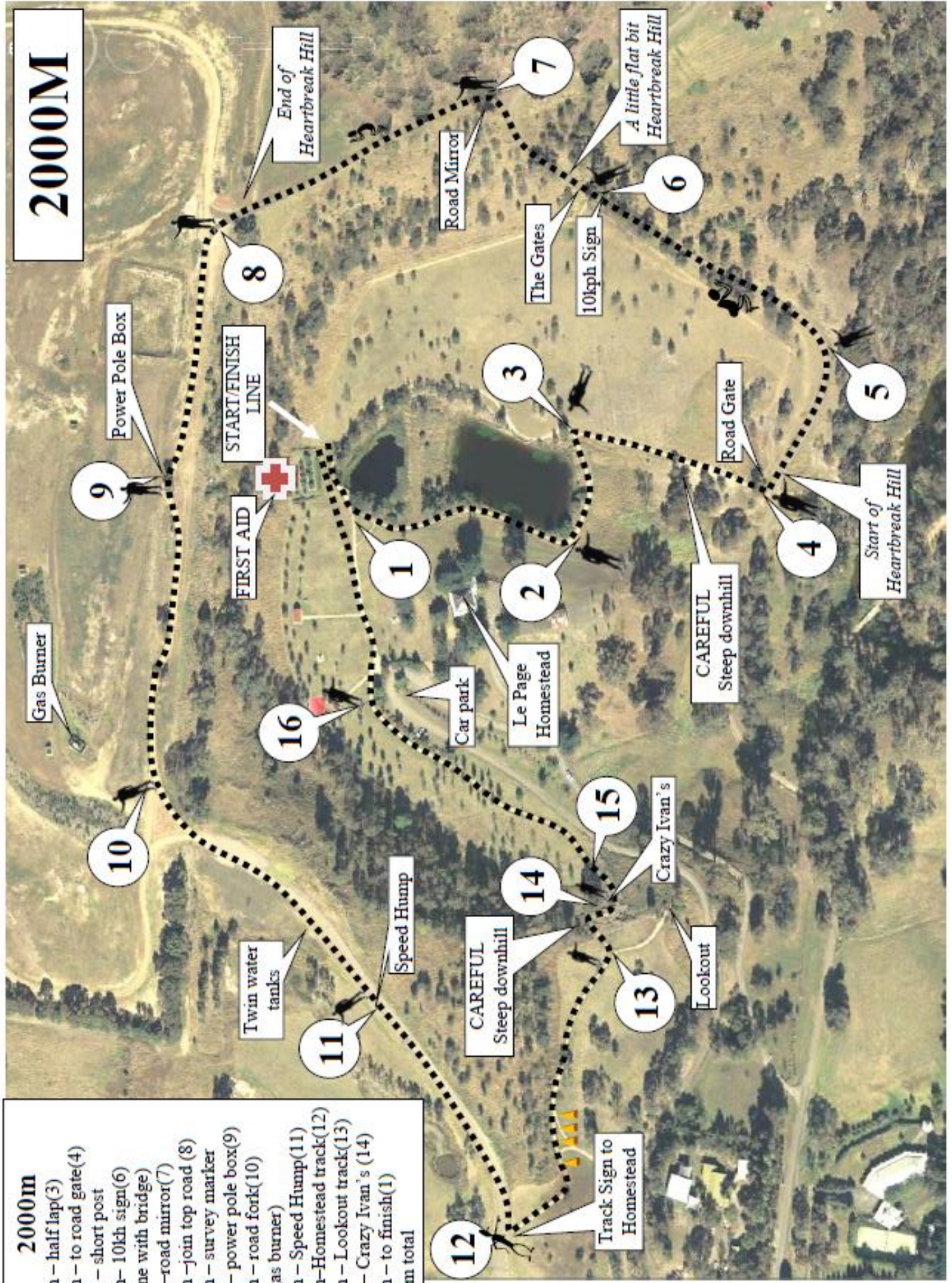
1st lap around the lake

2nd lap half way around lake then up hill to “the Gates” and home



2000m

- 247m – half lap(3)
- 117m – to road gate(4)
- 81m – short post
- 130m– 10kh sign(6)
(in line with bridge)
- 97m –road mirror(7)
- 183m –join top road (8)
- 103m – survey marker
- 97m – power pole box(9)
- 170m – road fork(10)
(At gas burner)
- 186m – Speed Hump(11)
- 160m–Homestead track(12)
- 186m – Lookout track(13)
- 20m – Crazy Ivan's (14)
- 240m – to finish(1)
- 2027m total



2000M